



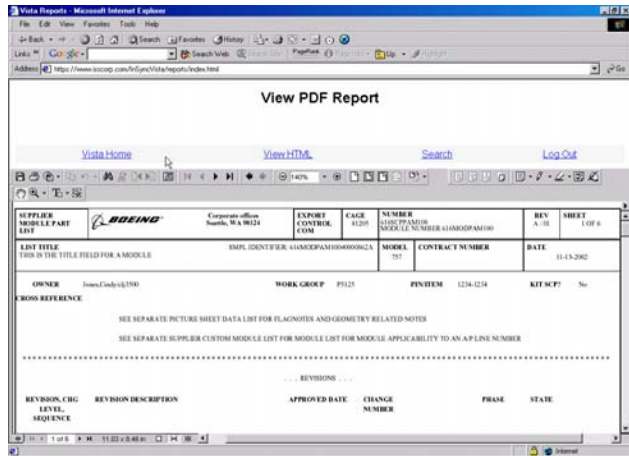
# InSync/SI-BCA

## InSync/SI-BCA Features...

### Automated TDP Processing

InSync/SI-BCA contains automatic STEP TDP processing with status notification via email. STEP information is downloaded locally, translated, and loaded into the resident InSync database.

### Report Generation and Archival



Supplier Module Part List (SMPL) shown in PDF format as generated by InSync's web-based reporting system

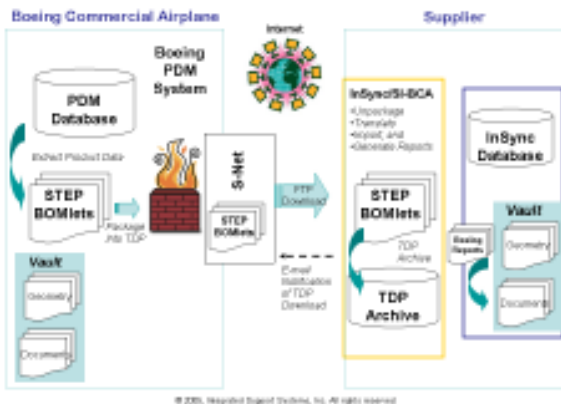
InSync/SI-BCA automatically generates and archives all Boeing reports upon import (and subsequently upon request.) These reports include the following:

- Supplier Custom Module List (SCML)
- Supplier Module Parts List (SMPL)
- Parts List (PL) includes Engineering Part, Supplied Part, Raw Material Part, Raw Material Assembly Part
- Picture Sheet Data List (PSDL)
- Revision Authorization (RA)
- Multi-level SCML, SMPL, and PL

InSync/SI-BCA is an "off-the-shelf" software package certified by Boeing Commercial Airplanes for use by Boeing suppliers in the management of STEP-based digital product information. With InSync/SI suppliers can avoid many difficulties associated with trying to manage and interpret large volumes of detailed product definition data available from Boeing in "digital paper" format (i.e., PDF). InSync/SI enables suppliers to easily manage and control the information included in Boeing Technical Data Packages (TDPs) and makes the information readily available for use in their business. The TDP's include detailed engineering and manufacturing information along with information about related parts and documents. Depending on the type of parts being manufactured, the TDP may contain references to the specific airplane line number and other critical usage information.

## InSync/SI-BCA Benefits...

- Efficiently manages the Boeing type-design information flow into the supplier organization.
- Supports local visualization and management of complex multi-level product definition data for better decision making
- Reduces total supplier resources needed to identify and analyze, and manage changes to the product definition
- Facilitates flow of information within the supplier organization to other information systems (ordering, manufacturing, etc.) to improve efficiency
- Maintains a local database "authority" of Boeing design intent and manufacturing definition in supplier's own context

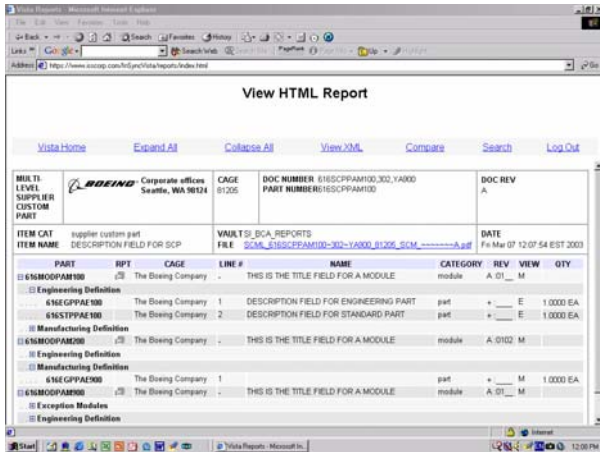


Technical data flow between Boeing and supplier



## Intelligent Browser-based Views

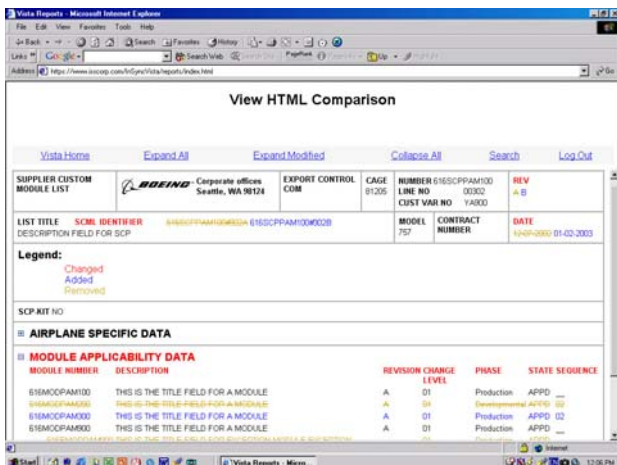
All reports are available via intelligent browser-based views. Single-level Bills of Material (BOM) report views appear in concise, "collapsible tree" format. The Multi-level BOM report views provide links to the single level reports. In addition, multi-level views may be created to present a complete product definition.



Multi-level Supplier Custom Part Report shown in InSync's web-based reporting system

## Automatic "Net Change" Capability

InSync/SI-BCA's electronic "differencing" capability immediately detects and highlights all differences between single- and multilevel report revisions. The color-keyed results denote added, changed, and deleted information.



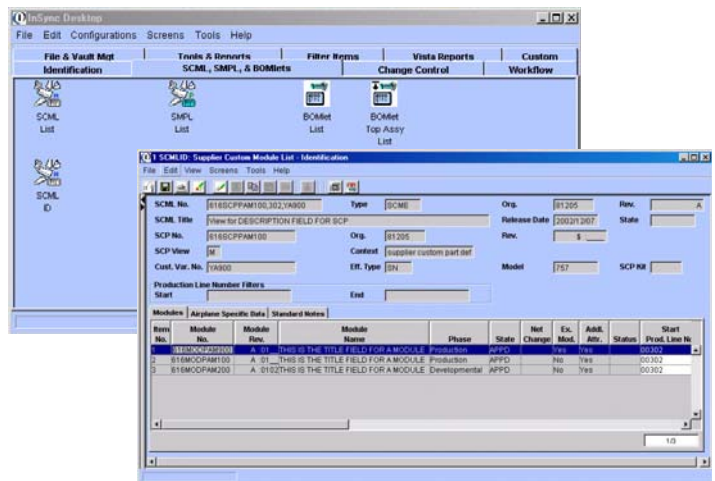
Color-coded "net change" comparison report

## Integrated Search Engine

Use InSync/SI's search engine to locate those documents that match specific search criteria. You can search based on part number, part name, supplier code, or virtually any text string. InSync/SI will quickly collect and display applicable documents along with a direct access link to each document.

## InSync Product Lifecycle Management System

The foundation of the InSync-SI/BCA is a powerful product lifecycle management (PLM) system. InSync provides robust "out-of-the-box" capabilities for complete product identification and configuration management. All product metadata imported through the Boeing processes is maintained and managed within the InSync system. InSync provides extensive tools for interfacing and integration with other enterprise information systems (ERP, process planning, enterprise PDM, etc.). Whether InSync is adopted as your company PLM system, or used purely as a repository for Boeing "design intent," the flexibility and robust features will provide tremendous return on investment.



InSync v3.1 intuitive desktop provides robust PLM functionality

For more information call (864) 654-1284 or email us at [sales@isscorp.com](mailto:sales@isscorp.com).

### About ISS

Integrated Support Systems, Inc. is committed to providing the most effective software, training, and services solutions for product supportability, product lifecycle management (PLM), configuration management (CM), and product collaboration – with particular focus on the aerospace and defense industries.

ISS and our strategic partners provide solutions to over 700 customers in 15 countries around the world. We are headquartered in South Carolina with European offices located near Paris, France.

